

CC File Transfer

User Manual

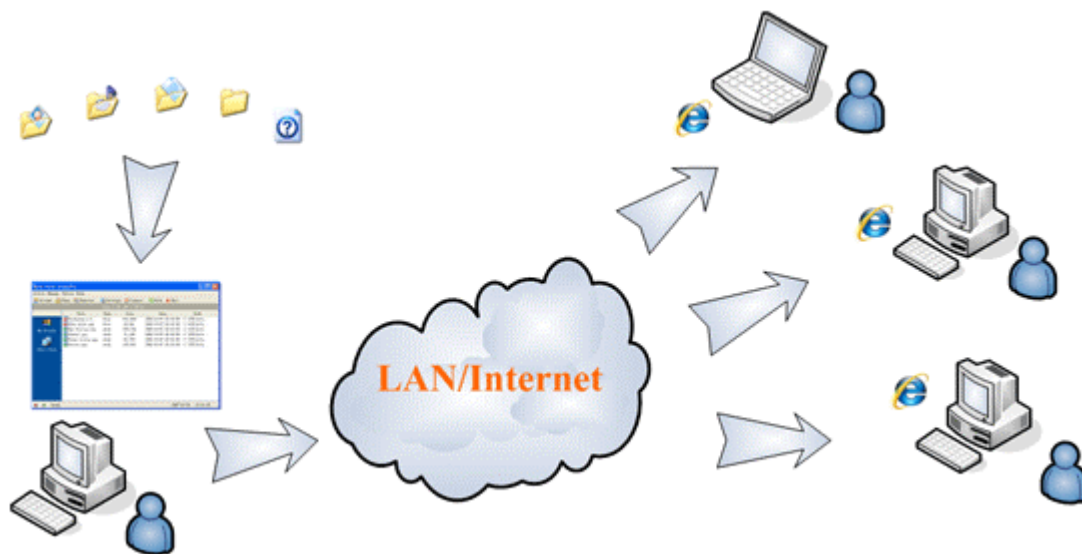
Youngzsoft 2008

1 Index

1	Introduction.....	2
2	Features	3
3	Installation.....	4
4	FAQs	11
5	Contact.....	12

2 Introduction

CC File Transfer is web based file transfer software built for people that need to transfer files PC to PC regularly. It helps you share files, photos, music and video with your friends. This file transfer program eliminates the hassles of FTP and limitations of email file transfer especially for transferring large files. The simple interface makes transferring files as easy as dragging and dropping files. It can transfer files over the Internet or LAN/home network even transfer files from Windows to Linux / Mac OS.



3 Features

CC File Transfer, PC to PC File Transfer software, can help you transfer files from one computer to another easily and quickly. Using CC File Transfer, you can share files, photos, music and video with your friends easily.

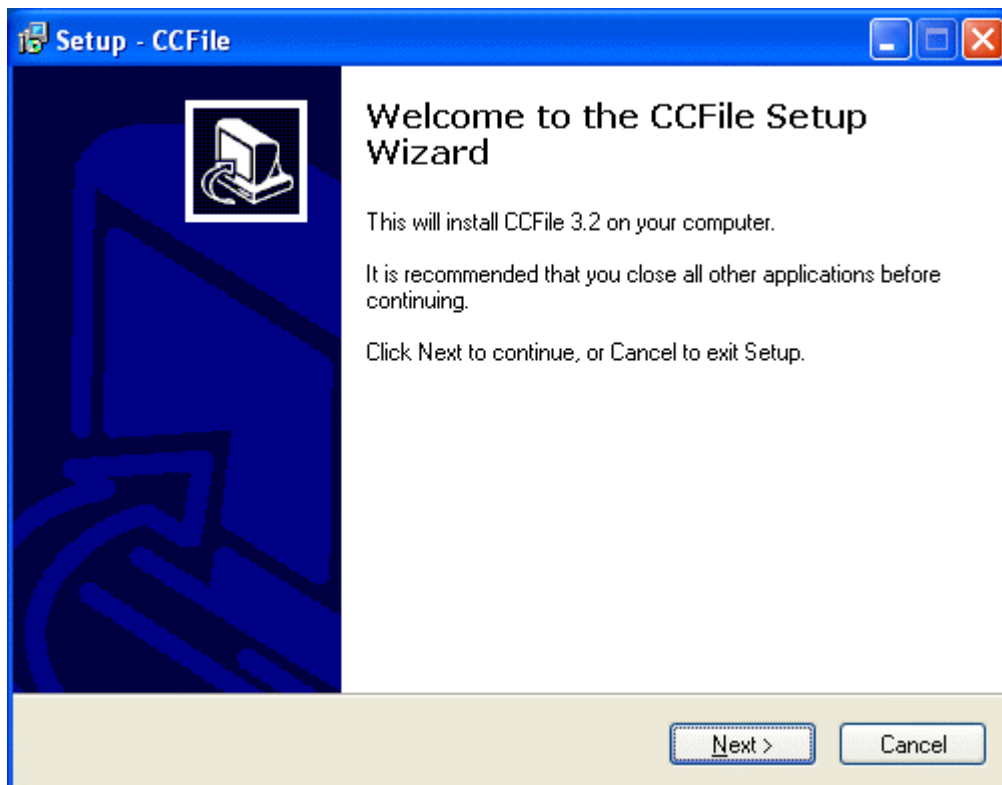
1. **Download Files:** Your friends can download files from you with web browsers or download managers.
2. **Upload File:** Your friends can upload files to you with web browsers.
3. **Large File Transfer:** CCFile makes large file transfer easily and the file size can be more than 4G.
4. **File Transfer between Windows, Linux, and Mac OS:** No matter what the clients' systems are, they can also download file from CCFile.
5. **No Software Installation at Clients:** Your friends need not to install any client software and can download files from web browsers.
6. **Resume Download and Multithread Download:** Most of all download management software support resuming downloading and multithread downloading. CCFile is compatible with most popular download managers.
7. **Download Folders:** CCFile supports folders browsing and zip downloading.
8. **Authentication Download:** CCFile supports IP-address and user credentials authentication. You can set some files sharing as auth, while others sharing as free. All visitors can access "share as free" files, and only the authorized users can access "share as auth" files. Moreover, You can grant users with upload file and remove file access rights.
9. **Friendly URL:** CCFile provides friendly URL services. Your friends can access your CCFile by <http://ccfile.net/username> without remember your IP address.
10. **UPNP router Compatible:** CCFile can detect UPNP device and setup it automatically.

Download CCFile at

<http://www.cc-file-transfer.com/download/ccfilesetup.exe>

4 Installation

Step 1. Install CCFile.



Step 2. Setup your router.

If your PC connects to the Internet directly with a fixed Internet IP address, your friends can use the URL shown on the status bar of CCFile to visit your shared files.

If your home/office PC is behind a Router, it means that the router will block the connections from Internet. CCFile provides two methods to allow the Internet users to visit your CCFile:

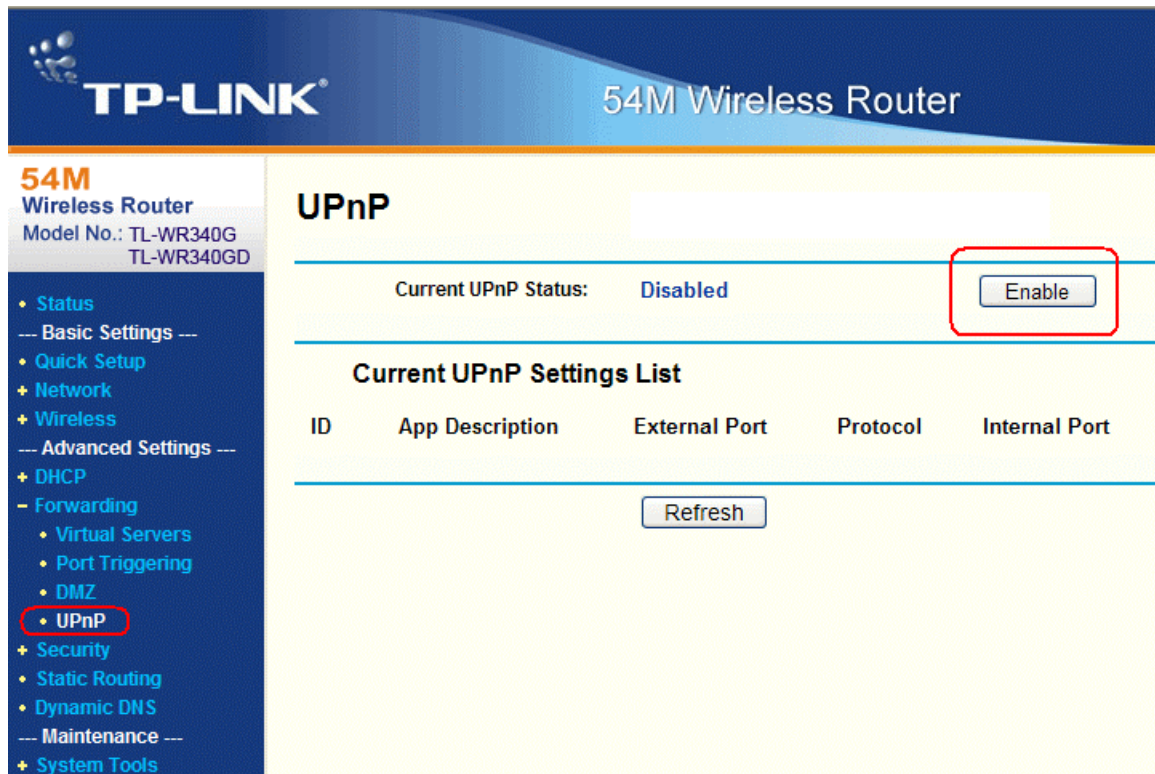
1) Open UPnP option in router and CCFile will setup UPnP automatically and enable the Internet accessing. We recommend this method.

How to enable UPNP in router?

If CCFile is installed behind router, you need enable UPNP in router.

If the router is TP-Link, please visit <http://192.168.1.1> and input router username and password (default username is 'admin' and password is 'admin')

1. "Forwarding" -> "UPnP";
2. If the "Current UPnP Status" is "Disabled", click "Enable".



TP-LINK® 54M Wireless Router

54M
Wireless Router
Model No.: TL-WR340G
TL-WR340GD

- Status
- Basic Settings ---
- Quick Setup
- + Network
- + Wireless
- Advanced Settings ---
- + DHCP
- Forwarding
 - Virtual Servers
 - Port Triggering
 - DMZ
 - **UPnP**
- + Security
 - Static Routing
 - Dynamic DNS
- Maintenance ---
- + System Tools

UPnP

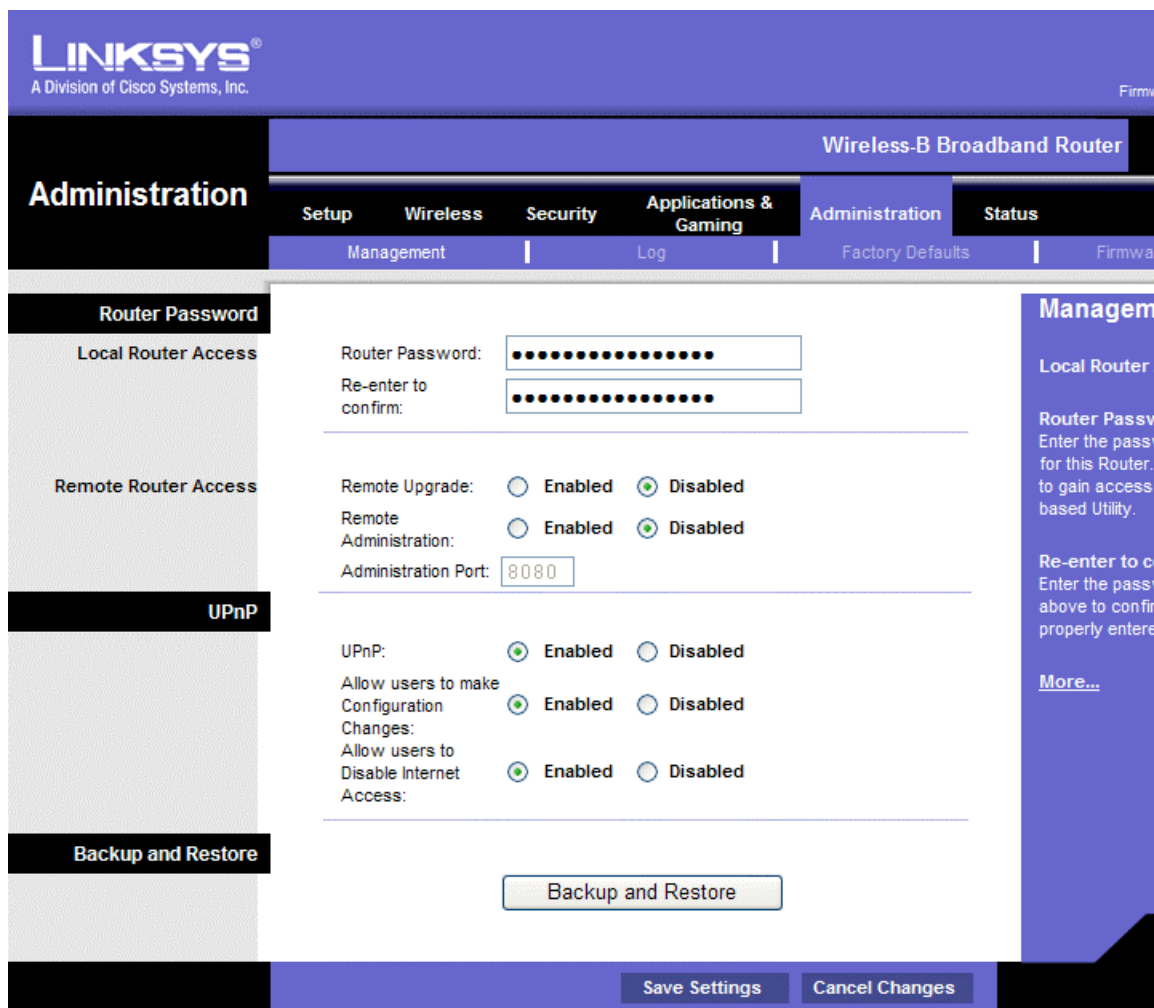
Current UPnP Status: Disabled

Current UPnP Settings List

ID	App Description	External Port	Protocol	Internal Port
----	-----------------	---------------	----------	---------------

If the router is Linksys, please visit <http://192.168.1.1> and input router username and password (default username is 'admin' and password is 'admin')

1. "Administration" -> "Management".
2. "UPnP": Enabled; "Allow users to make configuration Changes": Enabled; "Allow users to Disable Internet Access": Enabled.
3. "Save Settings".



2) Add port forwarding (port mapping) rule in router.

How to add port mapping in router?

We take Linksys for example. Please visit <http://192.168.1.1> and input router username and password (default username is 'admin' and password is 'admin').

1. "Application & Gaming" -> "Port Range Forwarding".
2. Application: ccfile; Start: 80; End: 80; Protocol: Both; IP Address: 192.168.1.101; Enable.
3. "Save Settings".

Notes: Start and End are corresponding to the CCFile's port in 'Options'. IP Address is corresponding to the PC's LAN IP address that installed CCFile.

LINKSYS
A Division of Cisco Systems, Inc.

Wireless-B Broadband Router

Applications & Gaming

Setup | Wireless | Security | Applications & Gaming | Administration | Status

Port Range Forwarding | Port Triggering | UPnP Forwarding

Port Range Forwarding

Port Range						
Application	Start	to	End	Protocol	IP Address	Enable
ccfile	80	to	80	Both	192.168.1.101	<input checked="" type="checkbox"/>
	0	to	0	Both	192.168.1.0	<input type="checkbox"/>
	0	to	0	Both	192.168.1.0	<input type="checkbox"/>
	0	to	0	Both	192.168.1.0	<input type="checkbox"/>
	0	to	0	Both	192.168.1.0	<input type="checkbox"/>
	0	to	0	Both	192.168.1.0	<input type="checkbox"/>
	0	to	0	Both	192.168.1.0	<input type="checkbox"/>
	0	to	0	Both	192.168.1.0	<input type="checkbox"/>
	0	to	0	Both	192.168.1.0	<input type="checkbox"/>
	0	to	0	Both	192.168.1.0	<input type="checkbox"/>

Port Range Forwarding used to set up port forwarding on your network. It allows requests from the Internet to reach your Router and be forwarded to a computer on your network. For example, you set up port number 80 (HTTP) forwarded to IP address 192.168.1.2, then requests from the Internet can be forwarded to that computer. It is recommended to use a computer's IP address.

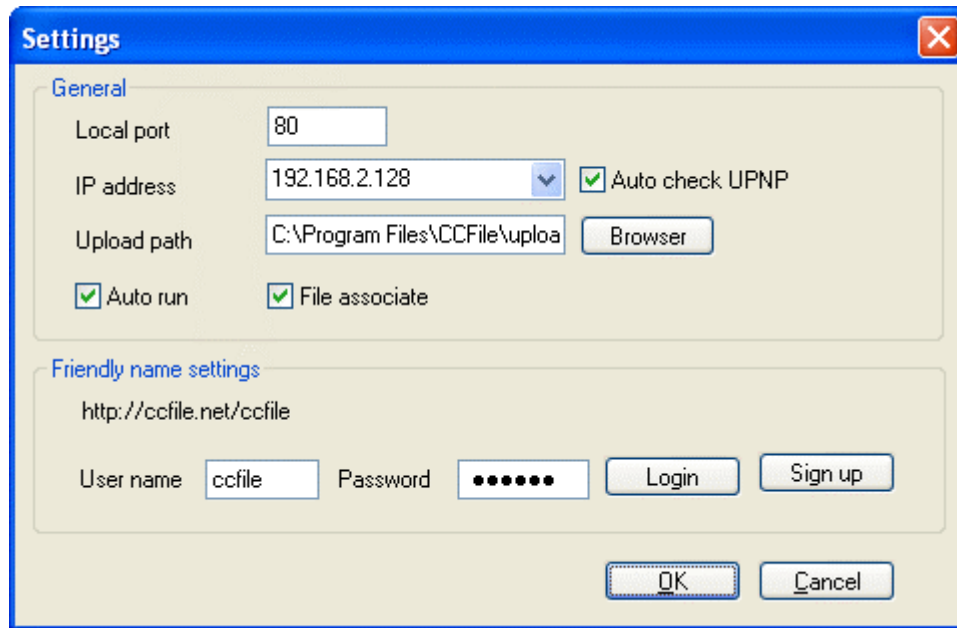
You may use this feature to establish a web server via an IP address. Be sure that you enter a valid IP address.

[More...](#)

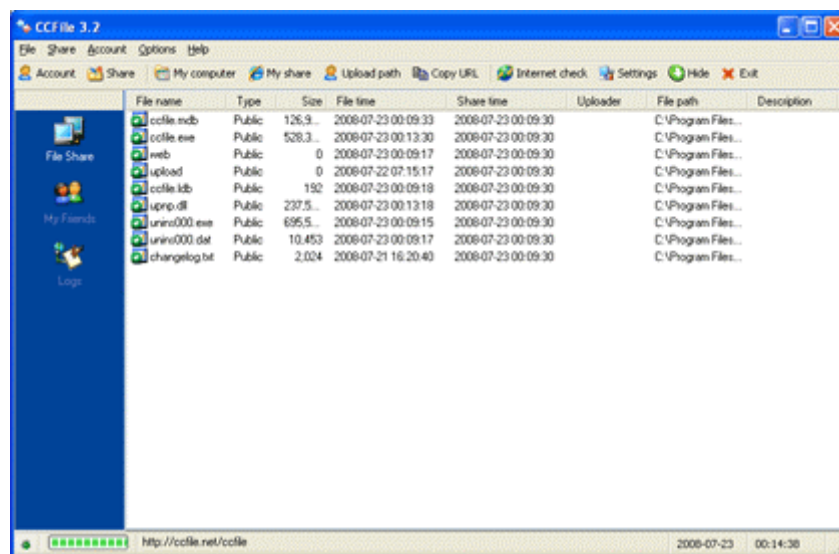
Save Settings | Cancel Changes

Step 3. Sign up a friendly URL.

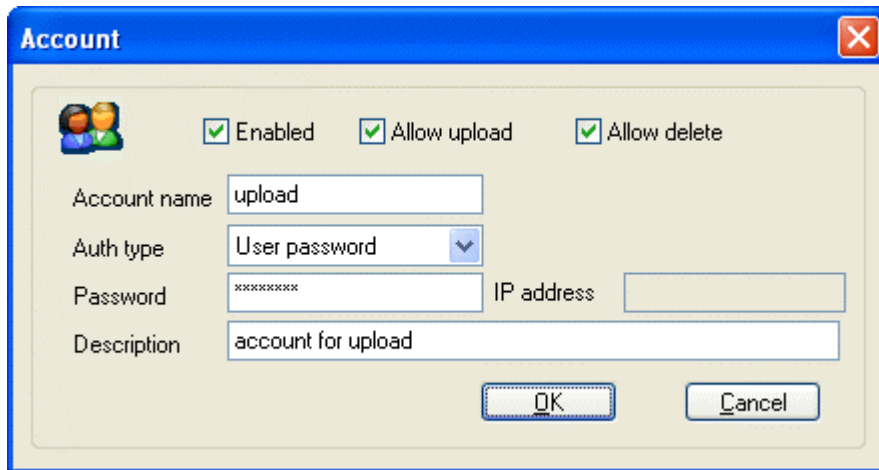
Usually, we can use Internet IP and port to access CCFile. But the Internet IP addresses are dynamical especially using ADSL or dial-up connections. Furthermore remembering the IP address URL is difficult. How to resolve this problem? Don't worry about it. CCFile provides a friendly URL service. You can sign up friendly URL at <http://ccfile.net/signup.php> and enter the username and password in CCFile options. Now you can use the friendly URL to access CCFile.



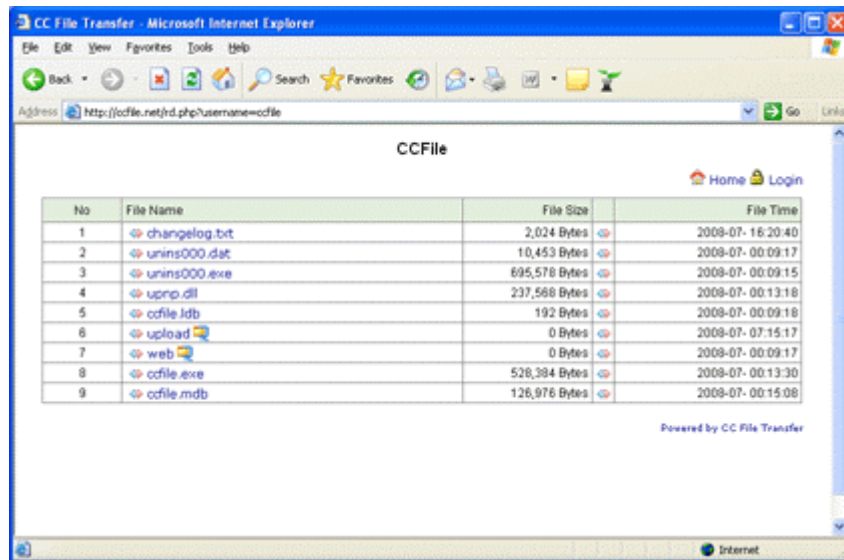
Step 4. After launch CC File Transfer, **drag files from Windows Explorer and drop into CC File Transfer**. Tell your friends the address (both URL and Port) displayed on inforbar (just below toolbar). Default is "Share as free", right select file(s) can change to "Share as auth".



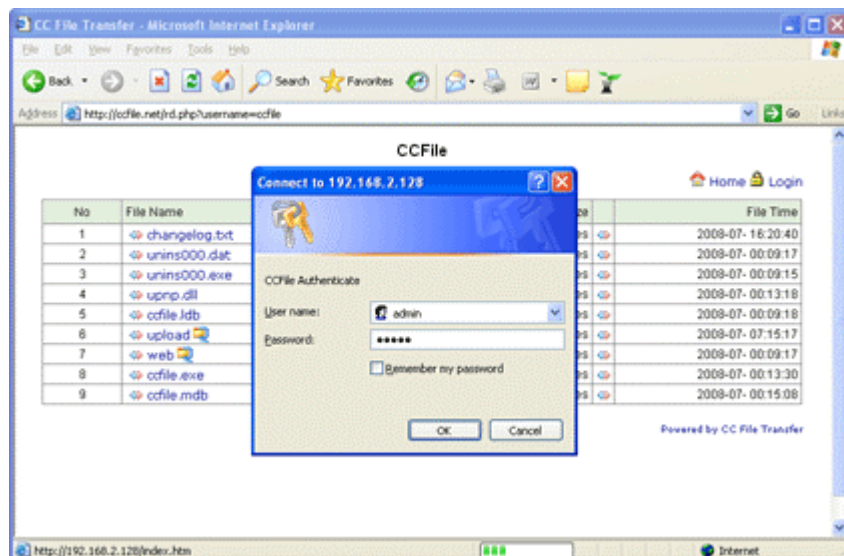
Step 5. Click "Account" button in toolbar to create a whitelist account for your friend. You can choose authentication of specified **IP address** or **user name + password**. Also you can grant download, upload and remove right to this account. The anonymous users can only download the free share files.

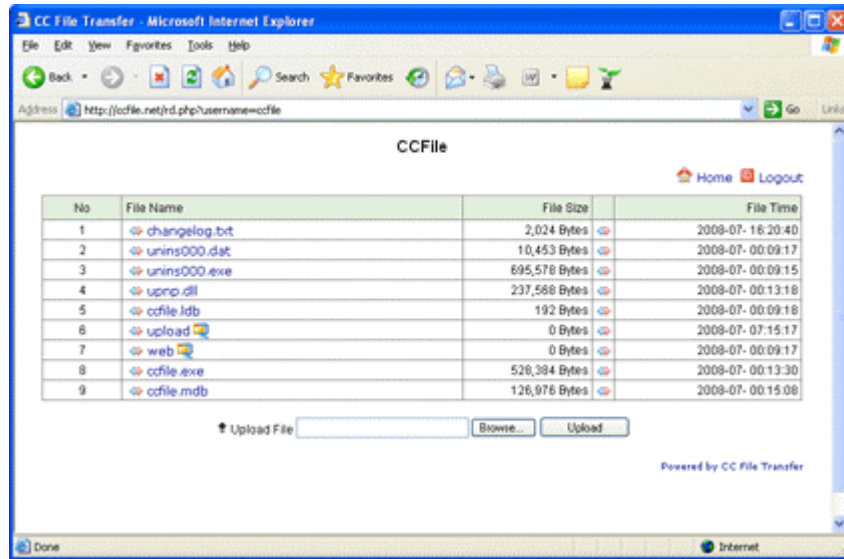


Step 6. Your friend can now open **Internet Explorer** (or Firefox etc.) and enter the address you provided to visit your sharing files.



Step 7. Click **Login** link to input his/her authentication information, then your friend can see all your sharing files. The anonymous users can only download the free share files.





5 FAQs

1. How to use friendly URL to visit CCFile over Internet?

Usually, we can use Internet IP and port to access CCFile. But the Internet IP addresses are dynamical especially using ADSL or dial-up connections. Furthermore remembering the IP address URL is difficult. How to resolve this problem? Don't worry about it. CCFile provides a friendly URL service. You can signup friendly URL at <http://ccfile.net/signup.php> and enter the username and password in CCFile options. Now you can use the friendly URL to access CCFile.

2. Which port CC File Transfer will use?

The default port is 80. You can change to other port in "Settings" dialog. If default port is failed, CC File Transfer will automatically try next 9 ports, for example from 81 to 89.

You can see your service URL and port on status bar on the main window, e.g. <http://192.168.1.100:81>.

3. Why cannot use CC File Transfer in WinXP?

CC File Transfer has been blocked by the XP inside firewall. You need to set WinXP firewall to allow CC File Transfer access network.

4. How to upload files in CCFile?

Only the authorized users can upload files. If you want to upload files, you need to create an account in CCFile first. Open the URL of CCFile, click the login link and input your username and password, and then you can see an upload form in the web page. All uploaded files will be stored in CCFile's upload folder and marked as auth file by default. Note: only the standard version has this function.

5. How I know if there is someone downloading my files?

There is a green led on the main window. If the green led is flashing, it means someone is downloading your files. Also you can click the "log" button to see who are downloading the files.

6. How to download folders in CCFile?

You can drag and drop the folder into CCFile. In the CCFile download page, there are two links besides the folder name. If you click the first link, you can browser the folder. If you click the zip icon, you can download the entire folder as a zip format file. Note: only the standard version has this function.

6 Contact

CC File Transfer (CCFile)

Youngzsoft

Product Page: <http://www.cc-file-transfer.com/>

Company Page: <http://www.youngzsoft.net/>

Email Address: support@cc-file-transfer.com